

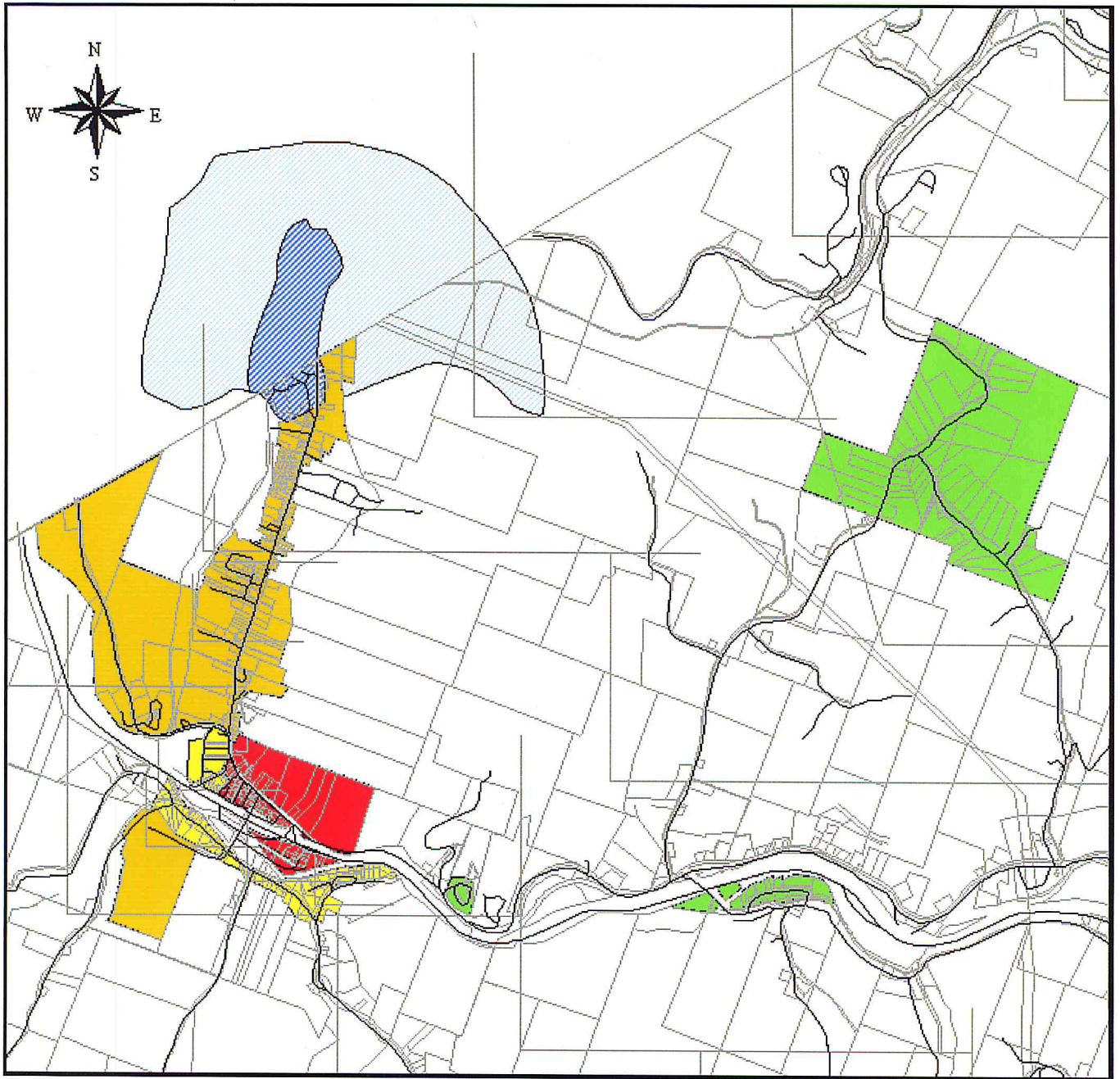
Livingston Manor and Vicinity

LEGEND

- GB General Business District
- NB Neighborhood Business District
- R1 Low-Density Residential District
- R2 Moderate to High-Density Residential District
- RC Rural Conservation District
- Aquifer Protection Overlay District
- Watershed Protection Overlay District
- Tax Parcels

This zoning map was completed using the Sullivan County Division of Planning and Community Development's Geographic Information System.

Copyright January 2002



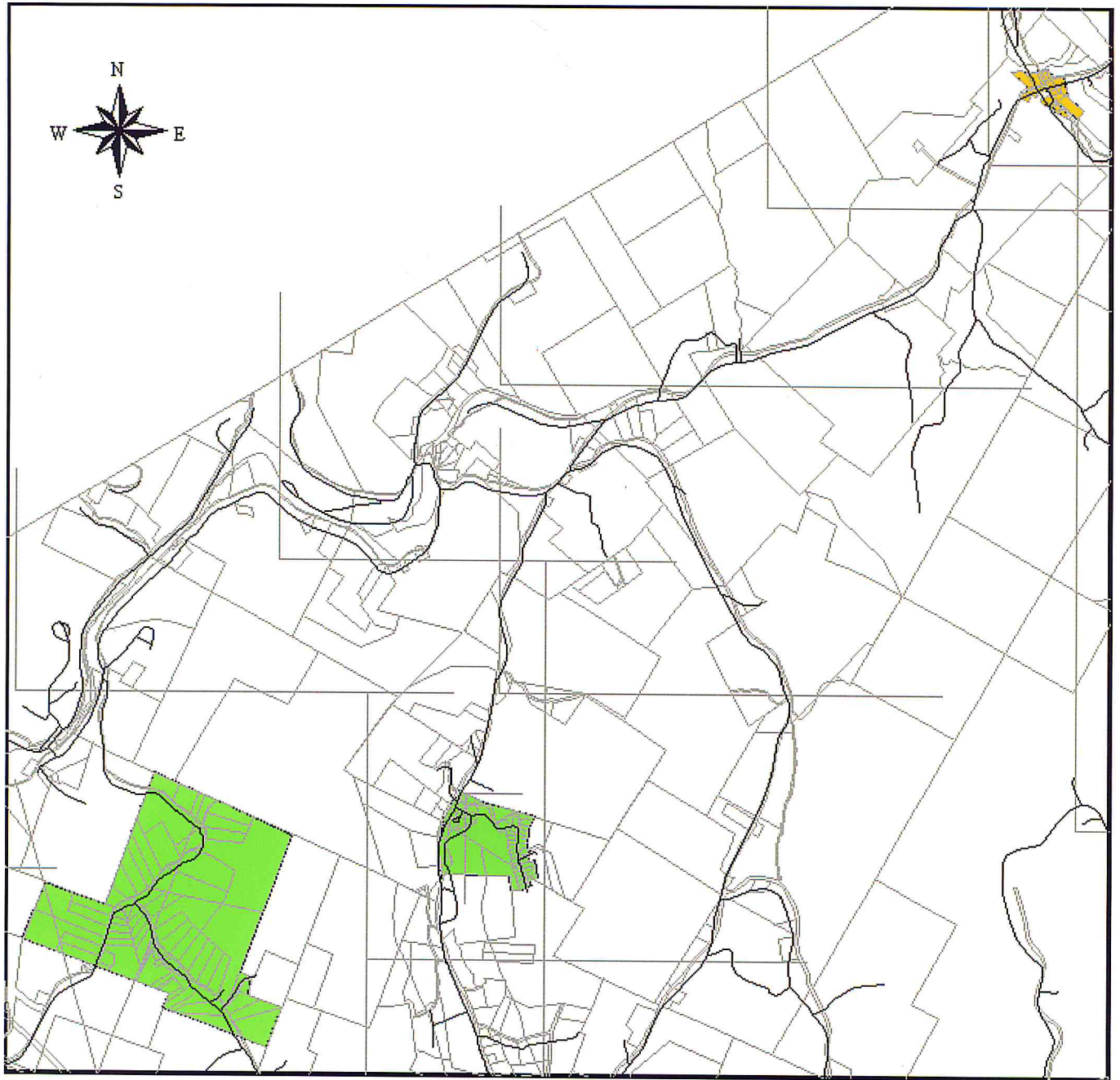
Roscoe and Vicinity

LEGEND

- GB General Business District
- NB Neighborhood Business District
- R1 Low-Density Residential District
- R2 Moderate to High-Density Residential District
- RC Rural Conservation District
- Aquifer Protection Overlay District
- Watershed Protection Overlay District
- Tax Parcels

This zoning map was completed using the Sullivan County Division of Planning and Community Development's Geographic Information System.

Copyright January 2002



Waneta Lake and Low Beach

LEGEND

- GB General Business District
- NB Neighborhood Business District
- R1 Low-Density Residential District
- R2 Moderate to High-Density Residential District
- RC Rural Conservation District
- Aquifer Protection Overlay District
- Watershed Protection Overlay District
- Tax Parcels

This zoning map was completed using the Sullivan County Division of Planning and Community Development's Geographic Information System.

Copyright January 2002



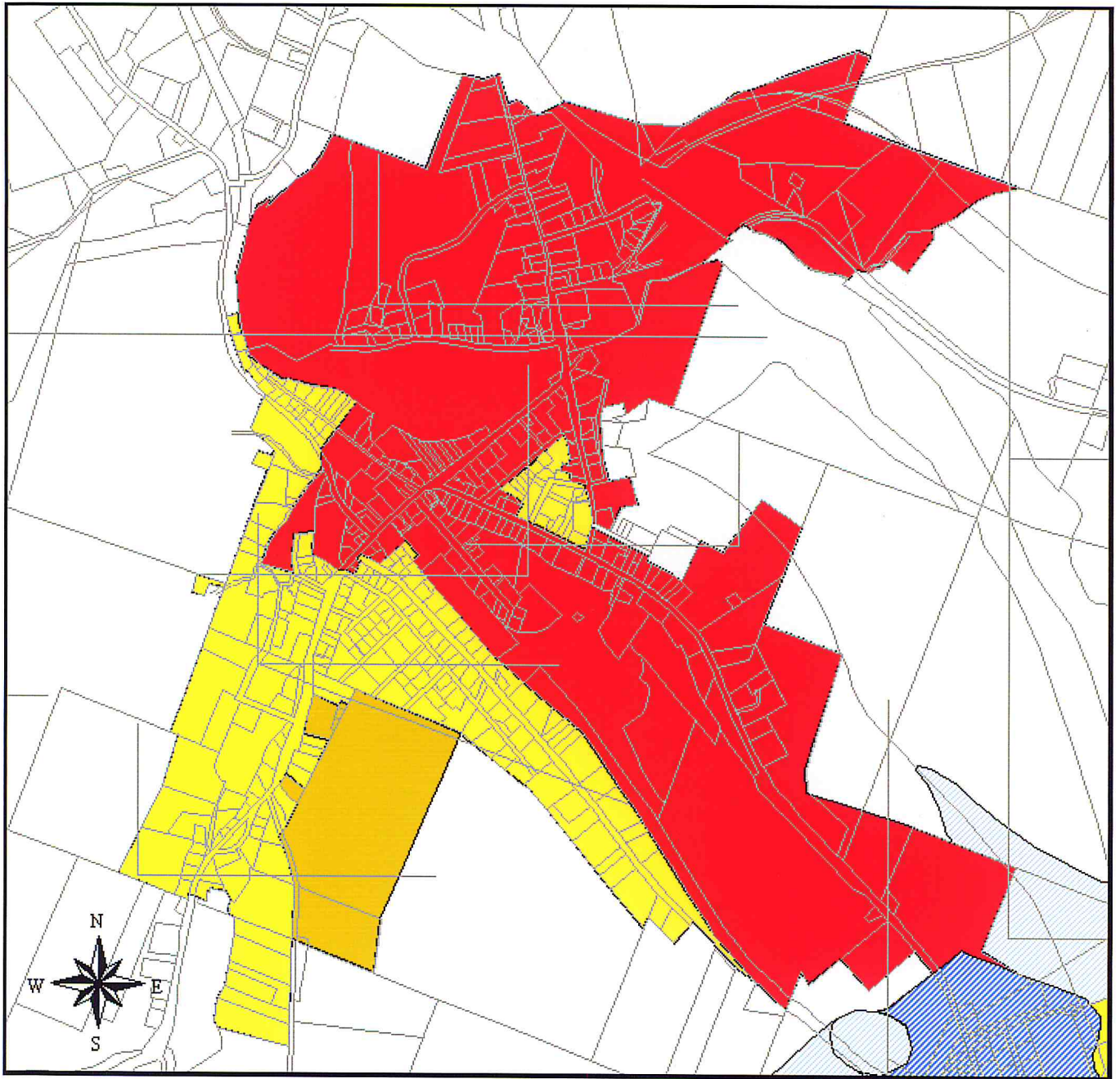
Debruce and Vicinity

LEGEND

- GB General Business District
- NB Neighborhood Business District
- R1 Low-Density Residential District
- R2 Moderate to High-Density Residential District
- RC Rural Conservation District
- Aquifer Protection Overlay District
- Watershed Protection Overlay District
- Tax Parcels

This zoning map was completed using the Sullivan County Division of Planning and Community Development's Geographic Information System.

Copyright January 2002



Livingston Manor

LEGEND

- GB General Business District
- NB Neighborhood Business District
- R1 Low-Density Residential District
- R2 Moderate to High-Density Residential District
- RC Rural Conservation District
- Aquifer Protection Overlay District
- Watershed Protection Overlay District
- Tax Parcels

This zoning map was completed using the Sullivan County Division of Planning and Community Development's Geographic Information System.

Copyright January 2002